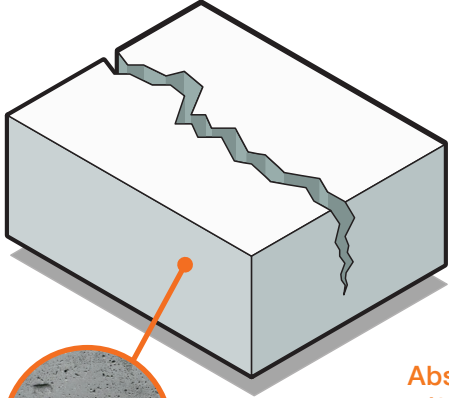


isolera BAU &
ABDICHTUNGS
SYSTEME

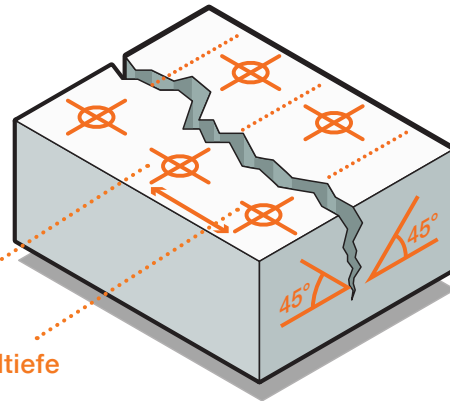
info: Lamellenschlagpacker

isolera GmbH
Gamsweg 17
36041 Fulda
t +49 (0) 661.250 94 83
f +49 (0) 661.901 43 66
info@isolera.de
www.isolera.de

1 Schadensbild
Rissverlauf

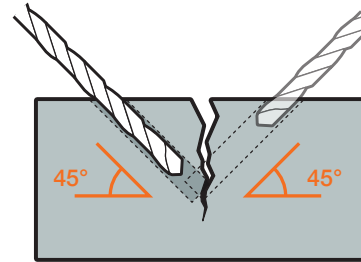


2 Anordnung
Bohrlöcher

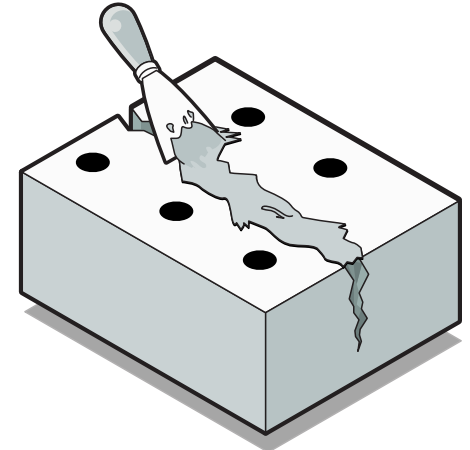


Abstand
1/2 Wandtiefe

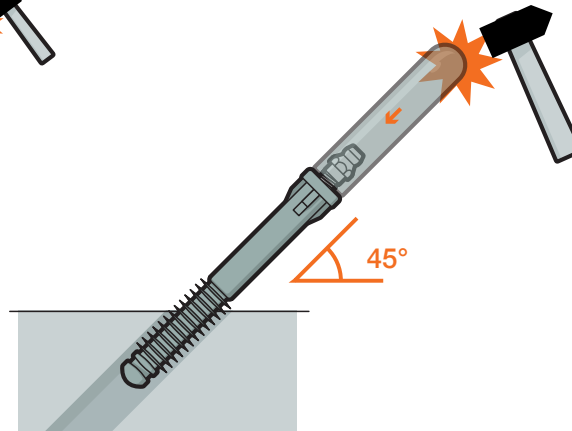
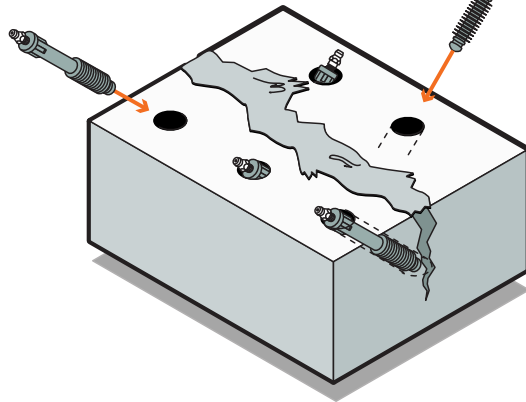
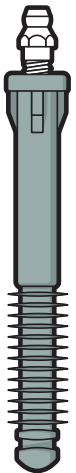
3 Bohrloch herstellen,
Löcher reinigen,
ausblasen, aussaugen



4 Riss ober-
flächlich schließen,
verdämmen



5 Packer
einschlagen



6 Packer injizieren,
verpressen

