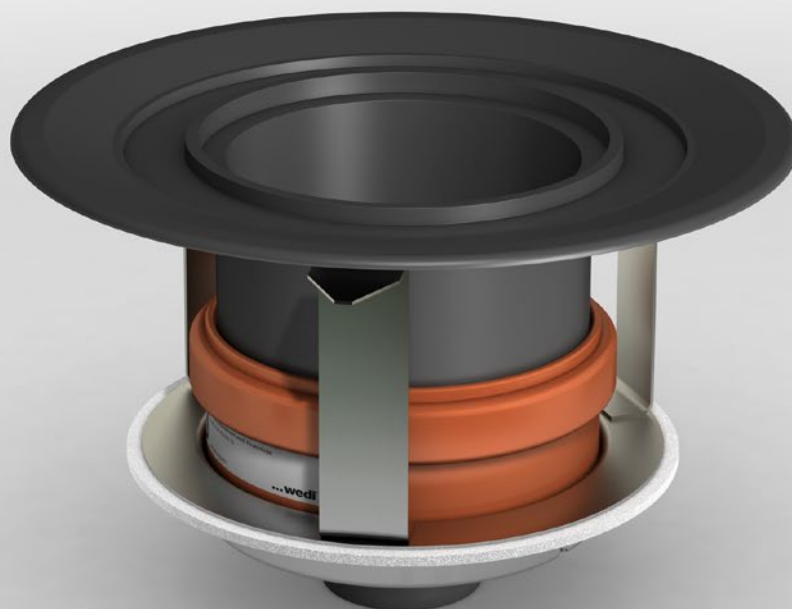


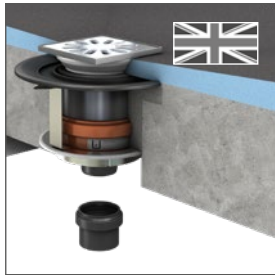
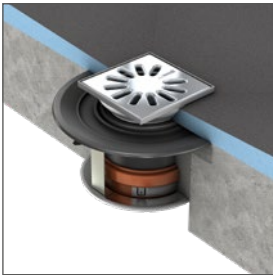
wedi Fundo Ablauf senkrecht, DN 50/70 mit Feuerstopp

wedi Fundo vertical drain, DN 50/70, fire protection collar | Écoulement vertical wedi Fundo, DN 50/70, coupe-feu | wedi Fundo afvoer verticaal, DN 50/70, brandstop | Scarico wedi Fundo verticale, DN 50/70, tagliafuoco | wedi Fundo desagüe vertical, DN 50/70, cortafuegos | wedi Fundo dreño vertical, DN 50/70, pára-fogo | wedi Fundo lodret afløb, DN 50/70, brandstop | wedi Fundo avløp vertikalt, DN 50/70, brannsperre | wedi Fundo golvbrunn lodrätt, DN 50/70, brandskydd | wedi svíslá výpusť Fundo, DN 50/70, protipožární zábranou | wedi Fundo oodpływ pionowy, DN 50/70, zaporą przeciwogniową | wedi Fundo oodvod vertikalni, DN 50/70, zaustavljanjem vatre

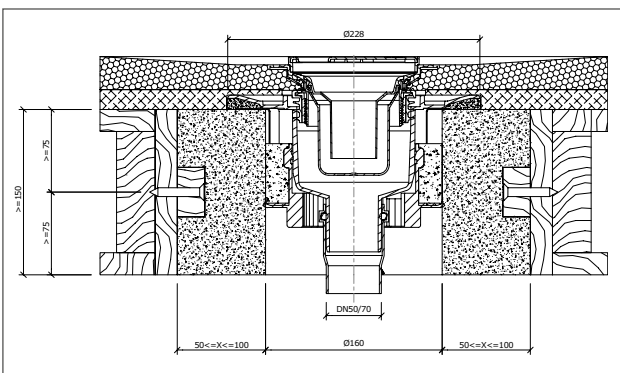
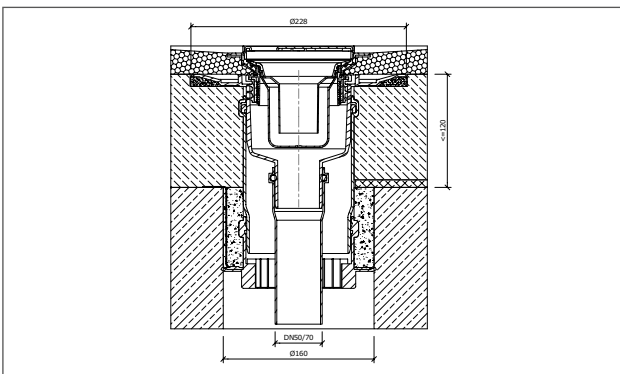
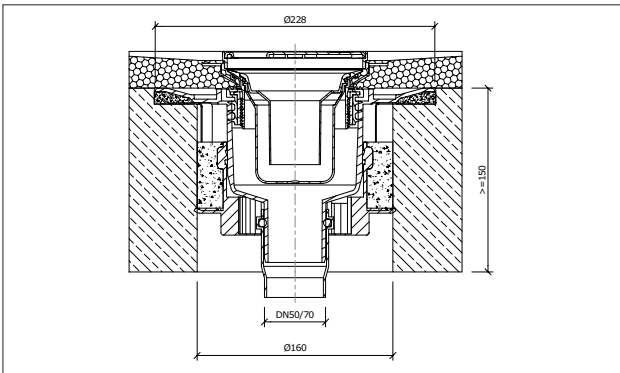




www.wedi.net



Art.-Nr. DN 50 073749002
 Art.-Nr. DN 70 073749012



Einbaubeispiele/Installation example/Exemple d'installation

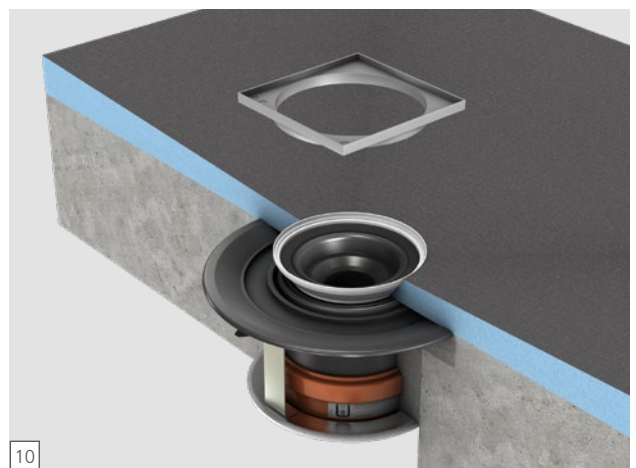
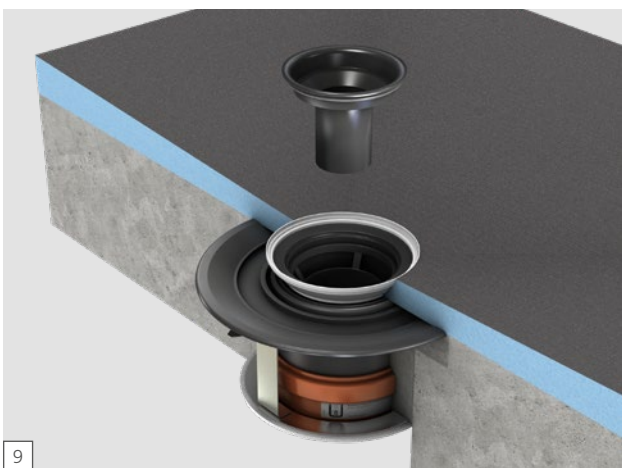
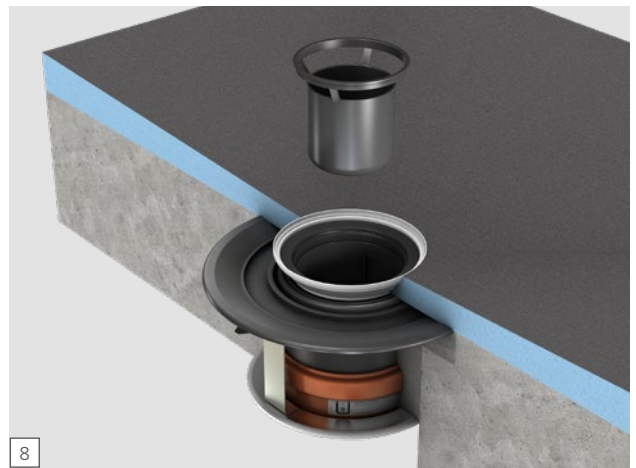
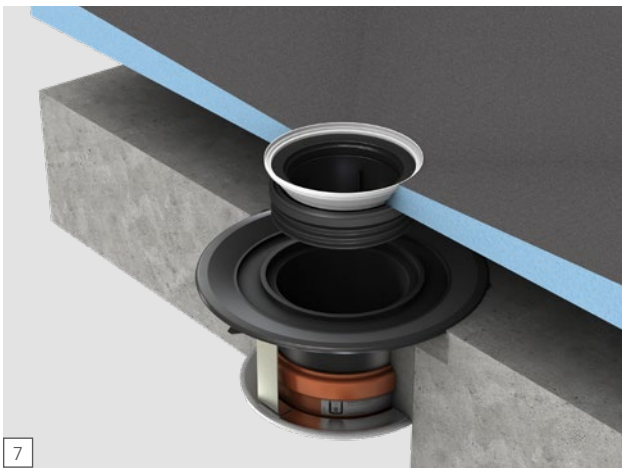
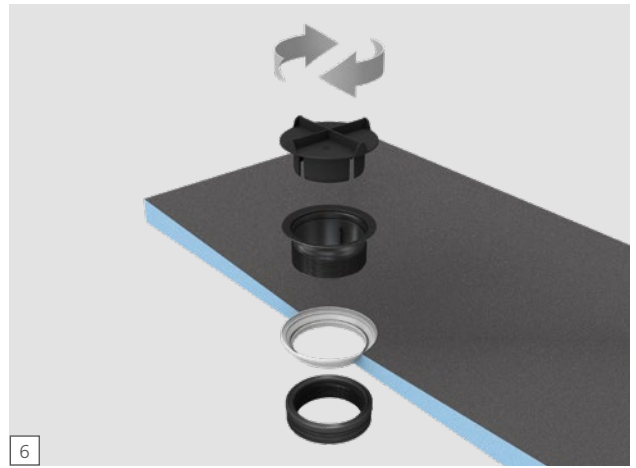
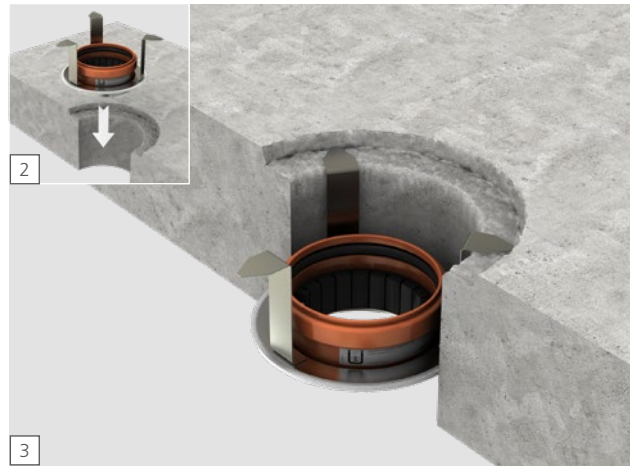
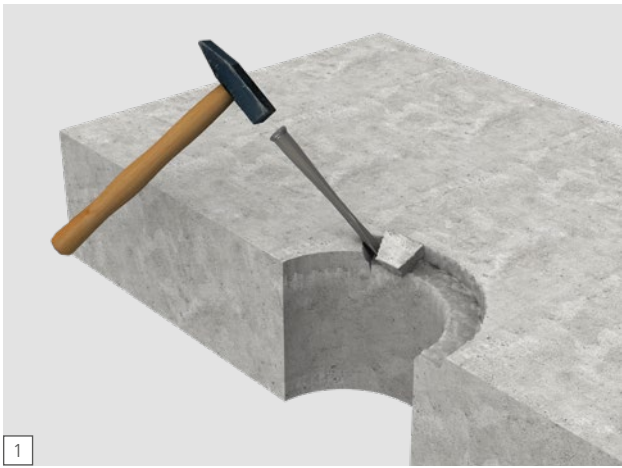
EN 1253-1;
 A; K3

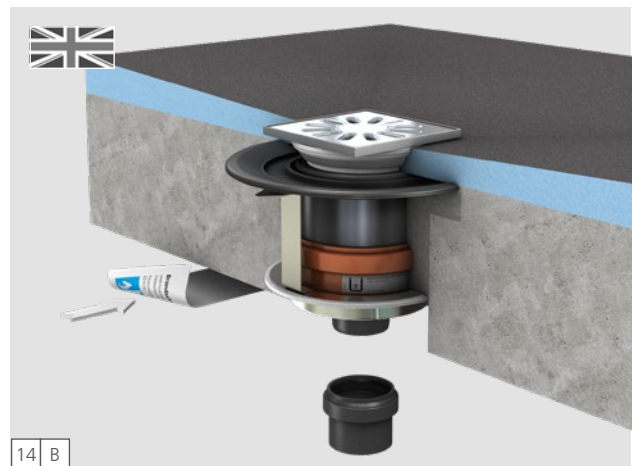
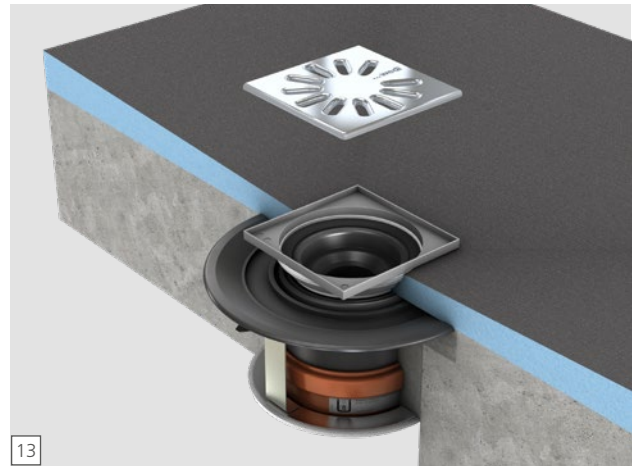
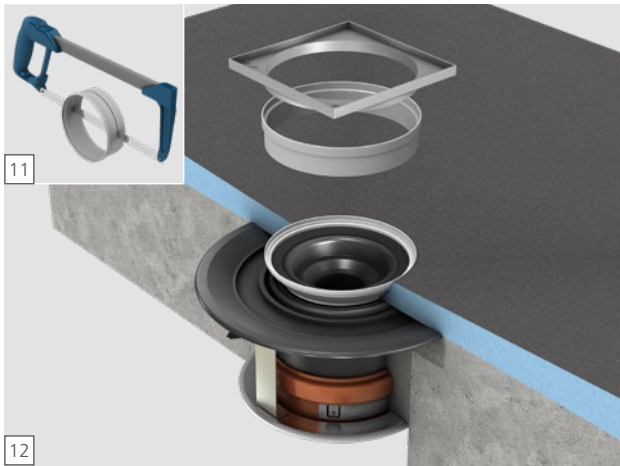


Brandschutz-System ..wedi

wedi Brandschutz DN 50/DN 70
 Zulassung Nr. 2.18.12.0342
 Druckunterdrückung

R10 R90 R60 K10





Zulässige Rohre | Permissible pipes | Tubes autorisés:

An den wassergefüllten Bodenablauf dürfen folgende Anschlussleitungen angeschlossen sein | The following connection pipes may be connected to the water-filled floor drain | Les conduites de raccordement suivantes peuvent être raccordées à l'écoulement au sol rempli d'eau :

weichmacherfreies Polyvinylchlorid (PVC-U, PVC-HI)	gemäß DIN 8062	sowie DIN 19531
chloriertes Polyvinylchlorid (PVC-C)	gemäß DIN 8079	sowie DIN 19538
Polypropylen (PP)	gemäß DIN EN 1451-1	sowie DIN 8077
Polyethylen hoher Dichte (PE-HD)	gemäß DIN 8074	sowie DIN 19537-1
Polyethylen niedriger Dichte (LDPE)	gemäß DIN 19533	sowie DIN 8072
Acrylnitril-Butadien-Styrol (ABS)	gemäß DIN 16891	
Acrylester-Styrol-Acrylnitril (ASA)	gemäß DIN 16891	
Styrol-Copolymerisate	gemäß DIN V 19561	
vernetzte Polyethylen (PE-X)	gemäß DIN 16893	
Polybuten (PB)	gemäß DIN 16969	

bzw. aus Kunststoffen nach den allgemeinen bauaufsichtlichen Zulassungen | or made from plastics in accordance with the general technical approvals | ou en matières plastiques selon les agréments techniques nationaux

Z-42.1-265 "Silent db20"	Z-42.1-432 "Geberit Silent PP"	Z-42.1-506 "POLO-KAL XS"
Z-42.1-241 "POLO-KAL NG (PKNG)"	Z-42.1-341 "POLO-KAL 3S"	Z-42.1-426 "TRIPLUS"
Z-42.1-223 "Rehau Raupiano plus"	Z-42.1-508 "Raupiano Light"	
Z-42.1-228 "Wavin AS"	Z-42.1-403 "WAVIN SiTech"	
Z-42.1-510 "CONEL DRAIN"	Z-42.1-481 "Master 3"	
Z-42.1-220.. "Friaphon"	Z-42.1-399 "POLiphon" und "dBlue"	
Z-42.1-411.. "BluePower"	Z-42.1-217 "Skolan dB"	



wedi GmbH
 Hollefeldstraße 51
 48282 Emsdetten
 Deutschland

Telefon +49 25 72 156-0
 Telefax +49 25 72 156-133

info@wedi.de
 www.wedi.net